

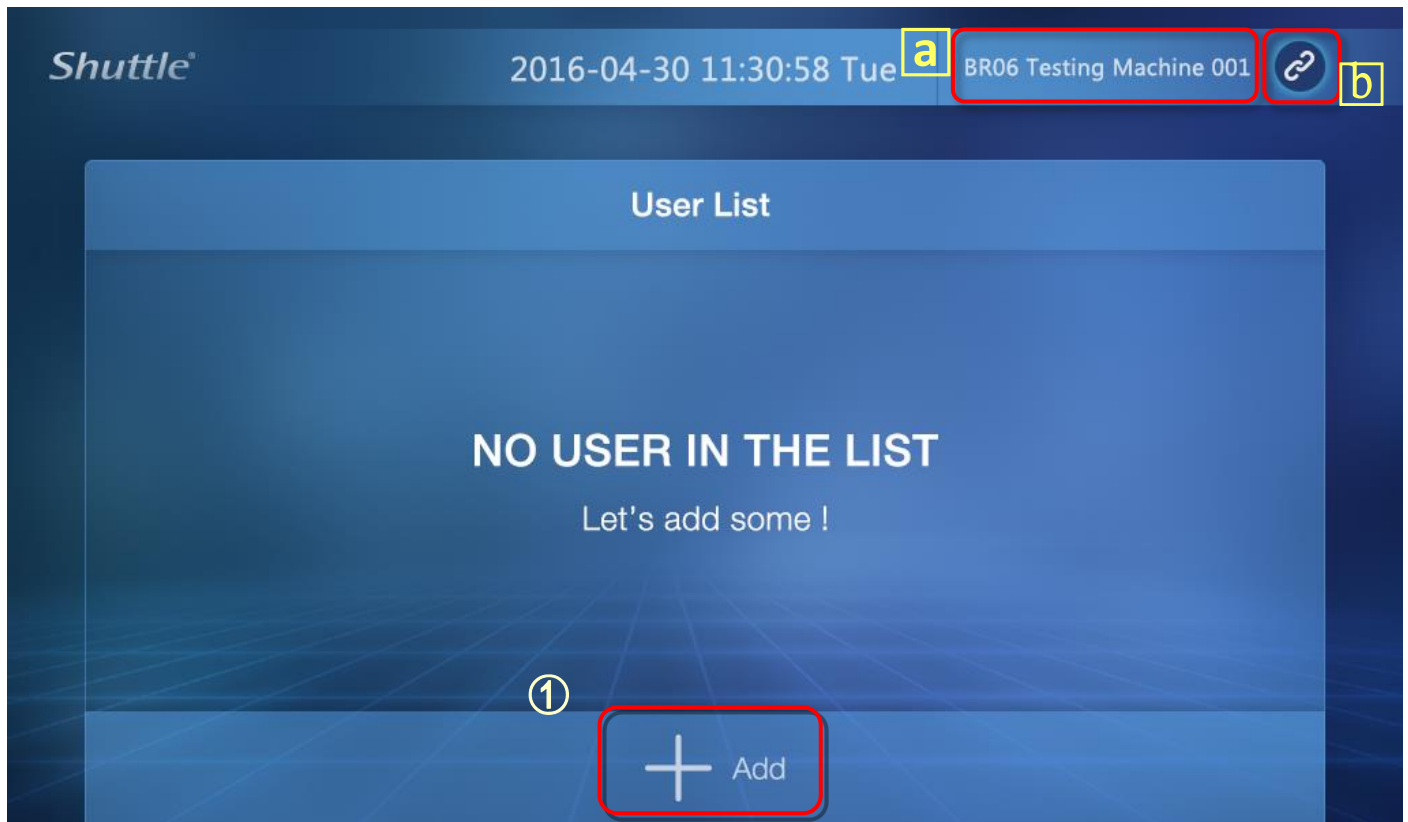
BR06

Register Mode Setting

Setup1. press the [+ Add] to start adding users.

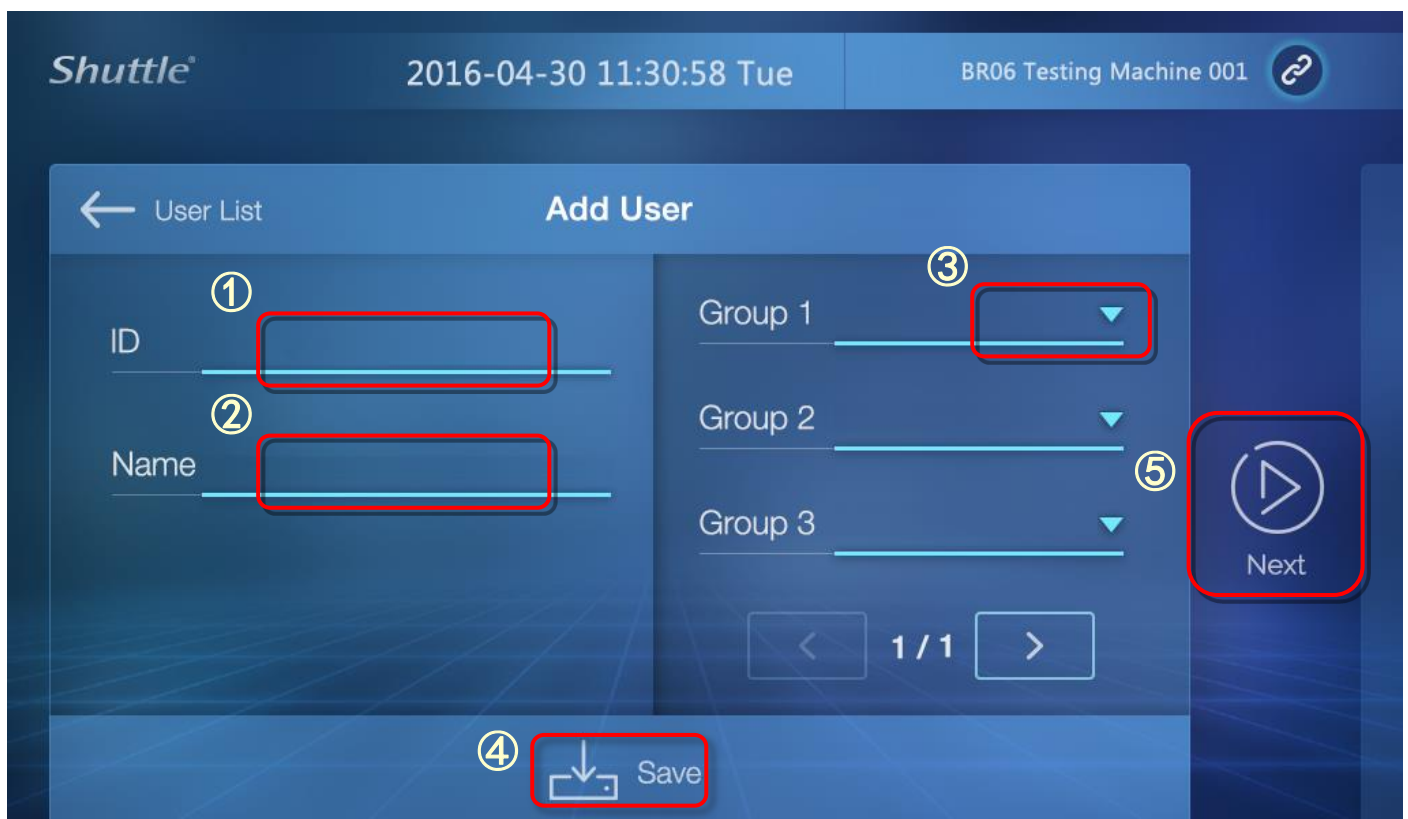
Icon **a** shows the host name, you can touch here to switch IP and SW version.

Icon **b** is the network connection status.



Setup2. Type user ID and Name. And then select a Group, [Groups are set in server]

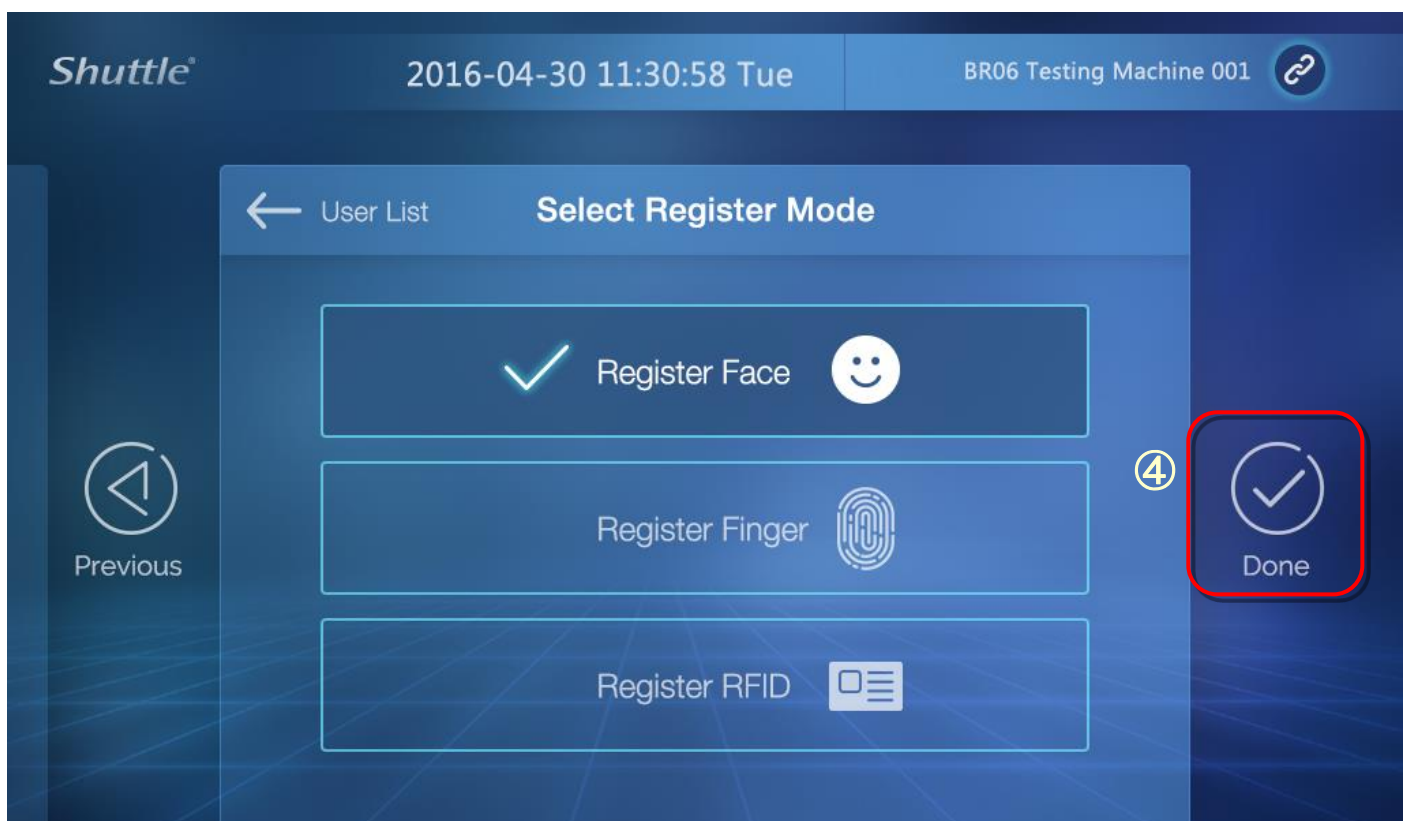
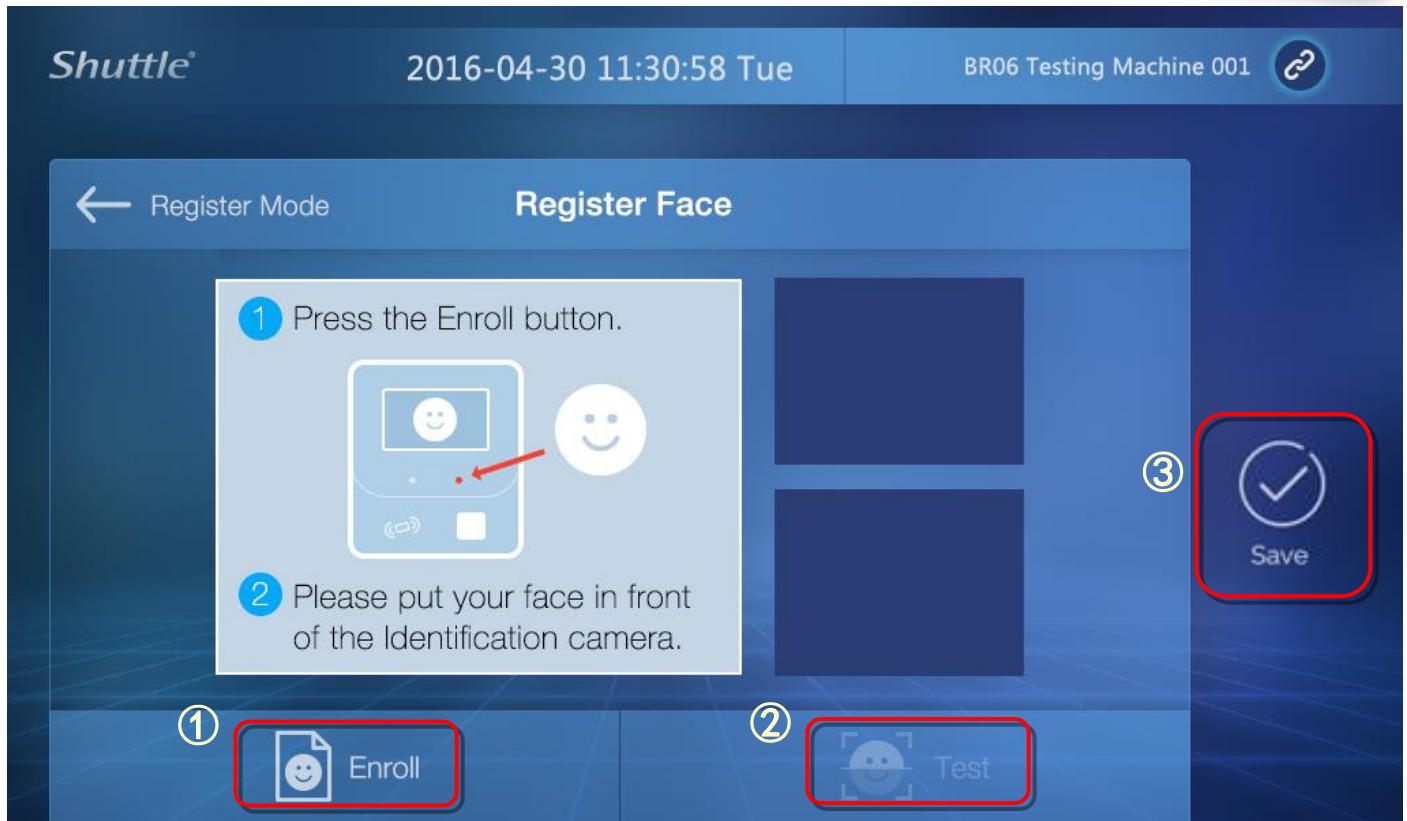
Finally press the Save and the Next button.



Setup3. Register Face.

- Press the Enroll button to capture face feature.
- Press the Test button to verification discern.
- Press the Save button to next.

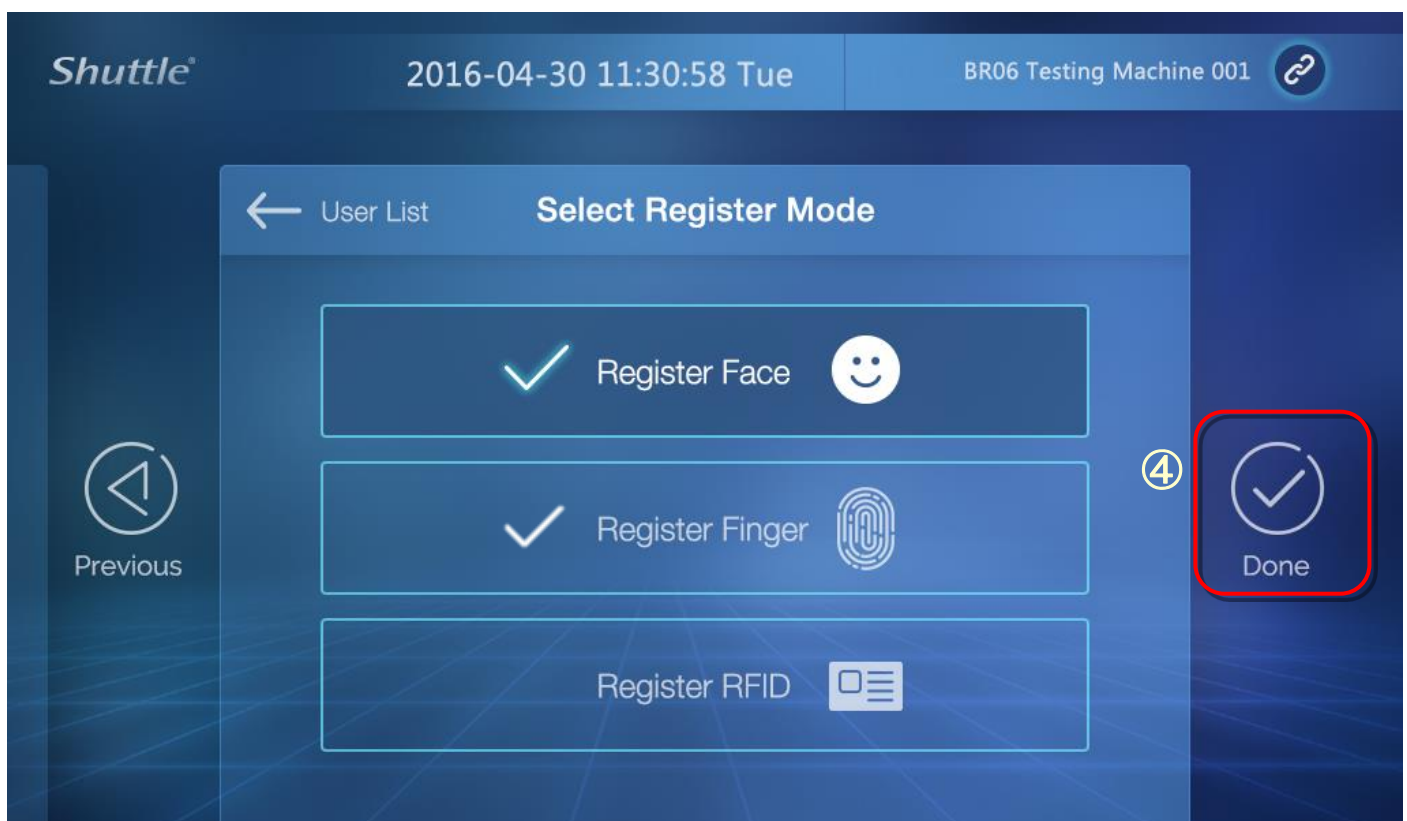
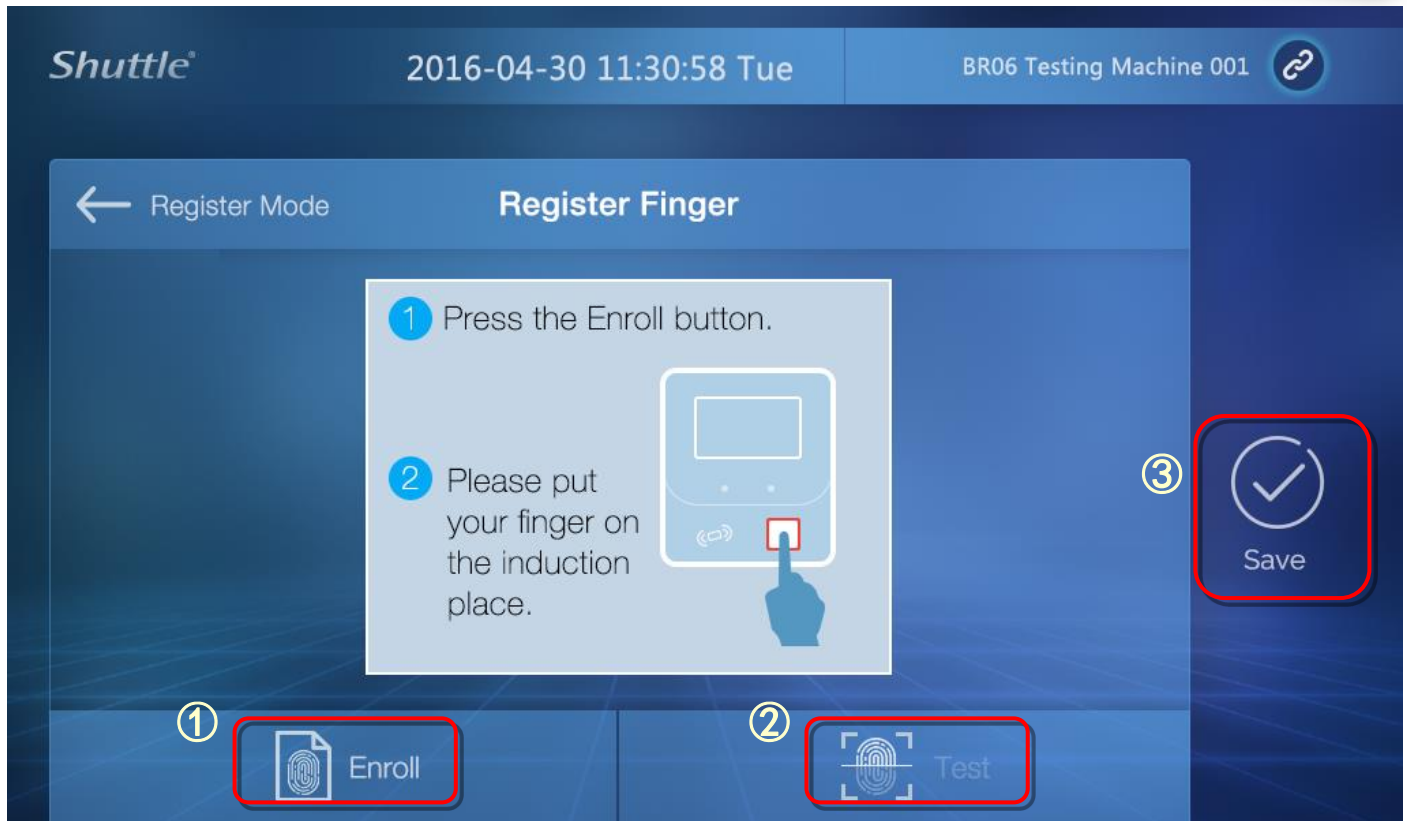
[If you only register the face, next press Done]



Setup4. Register Finger.

- Press the Enroll button to capture finger feature.
- Press the Test button to verification discern.
- Press the Save button to next.

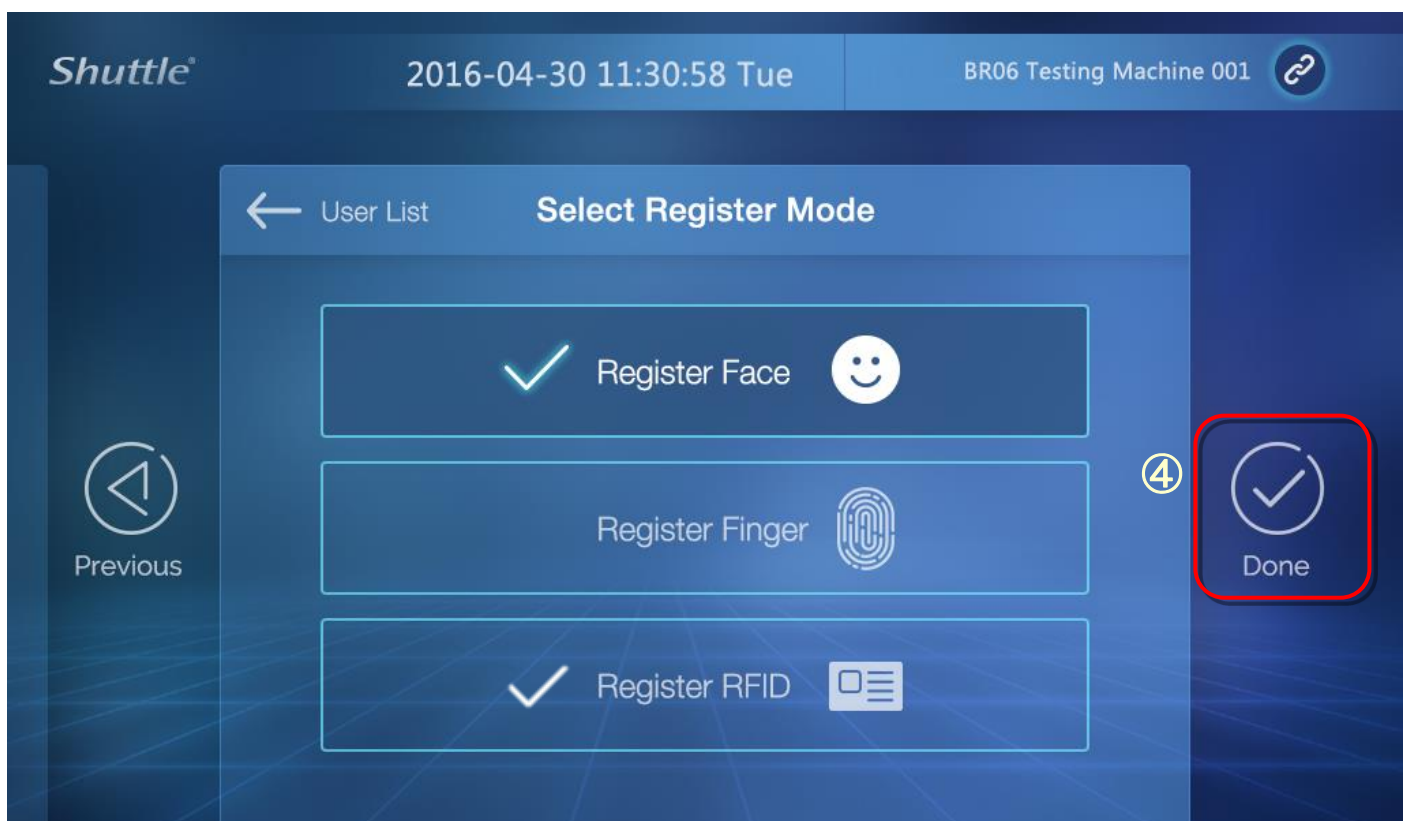
[If you only register the face & finger, next press Done]



Setup5. Register RFID.

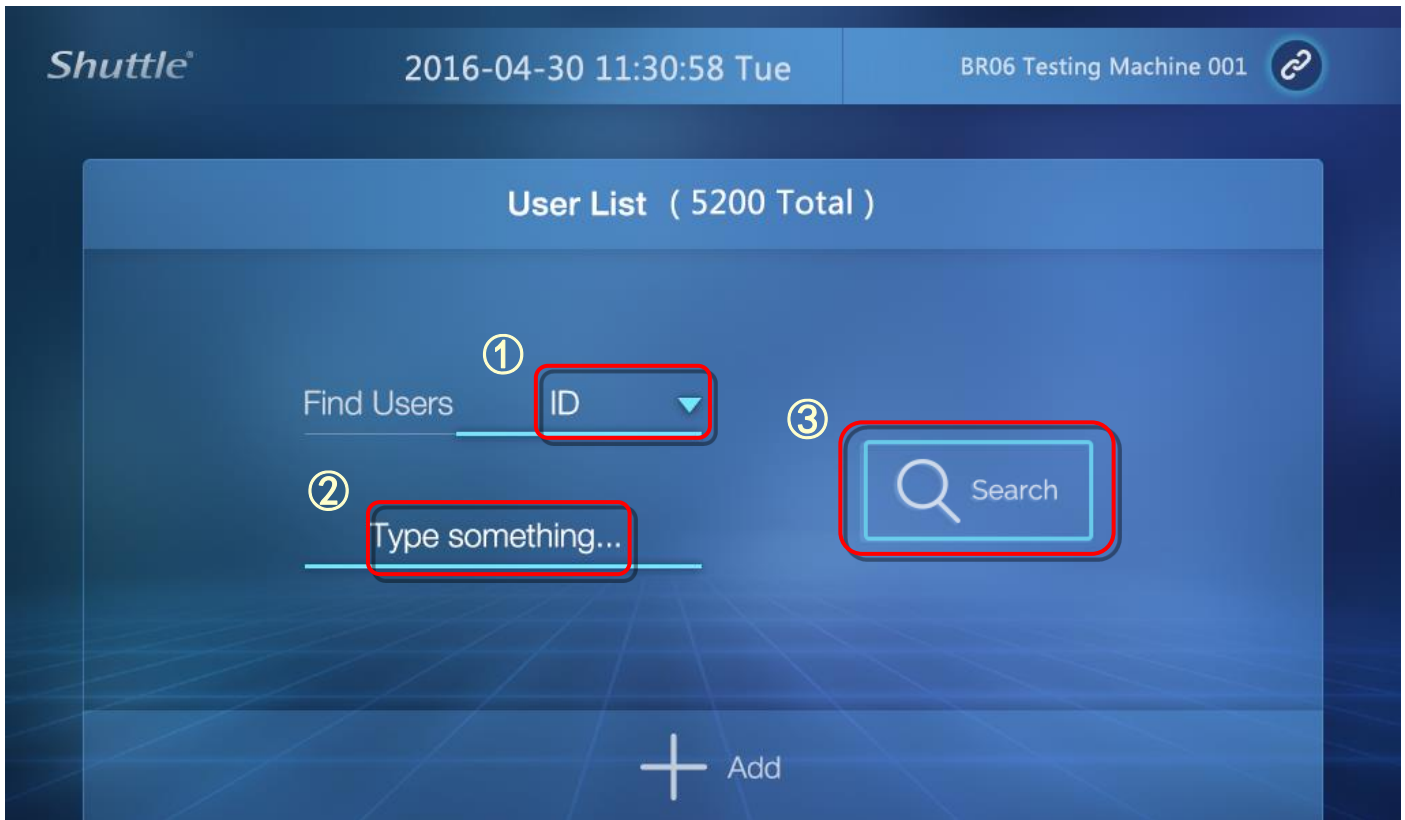
- Press the Enroll button and put your MIFARE card in front of the induction place.
- Press the Test button to verification the card.
- Press the Save button to next..

[If you only to register the face & RFID, next press Done]



* **About Search and modify user information.**

- ① Select ID or Name.
- ② Type a ID or Name.
- ③ Press the Search button to next.



- Press the [pen icon] to edit.

You can modify the “NAME” and “Group” or press Next button to register more or register again.
(Same the **Setup2.**)

